



Sea Level Rise Policy

DOCUMENT REVIEW AND APPROVAL

This document has been approved by:

Approved by		Minute No.	Date Approved
1.	Environmental Health and Regulation Committee	EHR058-16	2 May 2016
2.	Council Meeting		9 May 2016
3.			

Revision history:

Version	Author	Date	Revision
1.	Stormwater & Waterways Manager	May 2016	Original Version
2.	Stormwater & Waterways Manager	May 2016	Draft for Exhibition
3.			

CONTENTS

1.	PURPOSE	3
2.	APPLICATION.....	3
3.	DEFINITIONS	3
4.	PRINCIPLES	3
5.	RELEVANT LEGISLATION	3
6.	RELATED AND ASSOCIATED COUNCIL POLICY AND PROCEDURES	3
7.	RESPONSIBLE OFFICER	3
8.	RESPONSIBILITIES.....	4
8.1	Staff.....	4
9.	MONITORING.....	4
10.	REVIEW DATE	4
11.	RECORD KEEPING, CONFIDENTIALITY AND PRIVACY.....	4
12.	BREACHES AND SANCTIONS.....	4
	APPENDIX A – IDENTIFICATION OF AREAS TO WHICH THIS POLICY APPLIES	5
	APPENDIX B – SEA LEVEL RISE DATA PROJECTIONS.....	6

1. PURPOSE

To provide a framework to assist Council and the community to respond to emerging sea level rise risks.

2. APPLICATION

This policy applies to all properties that contain the 149(2) sea level rise notation detailed in **Appendix A**.

3. DEFINITIONS

AR5 – Fifth Assessment Report on Climate Change released by IPCC

IPCC – [Intergovernmental Panel on Climate Change](#)

RCP – representative concentration pathway adopted by the IPCC for AR5.

4. PRINCIPLES

The following principles apply to this policy:

- Council will consider the effect of climate change when determining development applications.
- Council will consider climate change in preparation of planning instruments, policies and flood studies.
- Council will apply the 2014 IPCC AR5 High Level RCP6.0 sea level rise projections detailed in **Appendix B** to planning instruments, policies, flood and coastal studies.
- Council will continue to monitor, review and manage the risks associated with sea level rise relating to local government functions.
- Council will continue to review its sea level rise data when new, credible climate change and sea level rise modelling data is available and update this policy as required.

5. RELEVANT LEGISLATION

This policy is consistent with the requirements contained in Planning Circular PS 14-003, Coastal hazard notations on section 149 planning certificates.

6. RELATED AND ASSOCIATED COUNCIL POLICY AND PROCEDURES

This policy informs the Sutherland Shire Council Local Environmental Plan 2015 and Development Control Plan 2015 (to be amended after draft policy endorsed).

7. RESPONSIBLE OFFICER

Stormwater & Waterways Manager.

8. RESPONSIBILITIES

8.1 Staff

Primary responsibility for the implementation of this policy resides with Council staff, in particular development assessment officers and stormwater & waterways staff.

9. MONITORING

Council's Stormwater and Waterways Manager in consultation with Environmental Science Unit will continue to monitor application of this policy and manage the risks associated with sea level rise relating to local government functions.

10. REVIEW DATE

The policy will be reviewed when new, credible climate change and sea level rise modelling data and assessment is released by IPCC.

11. RECORD KEEPING, CONFIDENTIALITY AND PRIVACY

The policy applies to all properties identified in the map attached as **Appendix A**. For each property that is identified as being at risk of future sea level rise the following notation will be placed on the Section 149(2) certificate.

"Part or all of this land has been identified as being at risk of future sea level rise by 2100, based on the Sea Level Rise Policy"

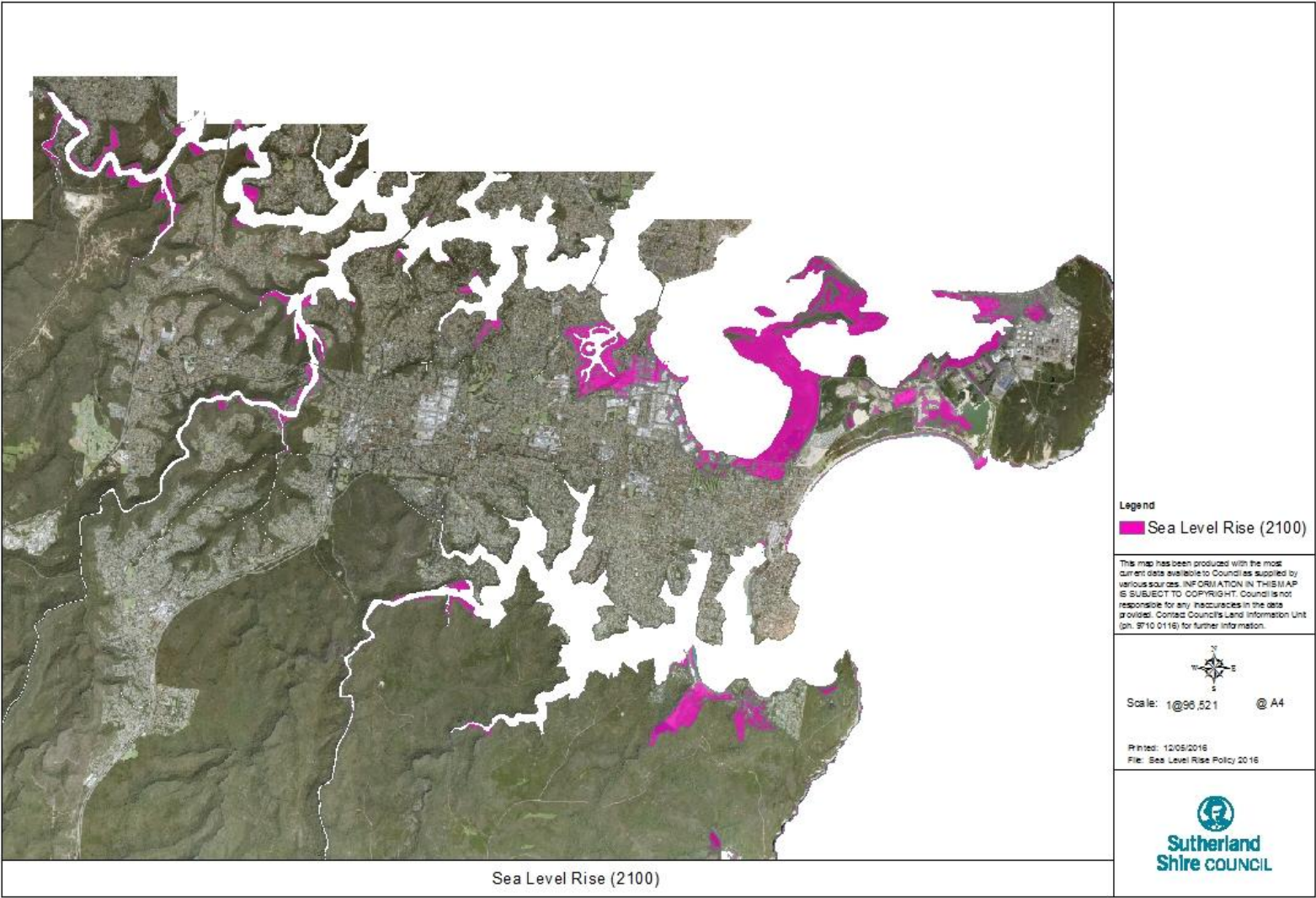
Further information on the specifics of the future sea level rise for this land can be obtained by contacting Council on 9710 0333"

The policy will be available on Council's website.

12. BREACHES AND SANCTIONS

NOT APPLICABLE

APPENDIX A – IDENTIFICATION OF AREAS TO WHICH THIS POLICY APPLIES



APPENDIX B – SEA LEVEL RISE DATA PROJECTIONS

The sea level rise projections used in this report are based on the high level RCP 6.0 emissions scenario. The sea level rise projections are illustrated in table 1 and figure 1 below.

Table 1 Projections for sea level rise RCP 6.0

Year	Sea Level Rise (m)
2015	0.00
2020	0.03
2030	0.10
2040	0.15
2050	0.23
2060	0.30
2070	0.39
2080	0.50
2090	0.61
2100	0.72

Figure 2 Projections for sea level rise RCP 6.0

